



LED



Industrial



Test



Comm



Broadcast

Single Output 500W Power Supplies



Features	Benefits
• Compact & Flat 1U Design	• Easier System Integration
• Programmable Output Voltage	• Broad Range of Applications
• Peak Power Capability 120% (24 & 36V models)	• Lower Cost, Smaller Size
• Average Active Efficiency @ 230V: 90.3%	• ErP Compliant

Specification		
Model		GWS500
AC Input Voltage	VAC	85 - 264VAC (300VAC for 5s)
Input Frequency	Hz	47 - 63Hz
DC Input Voltage	VDC	120 - 373VDC
Inrush Current (cold start)	A	20A/40A at 115VAC, 40A/40A at 230VAC, Ta=25°C (First Inrush/Second Inrush)
Power Factor (1)	-	Meets EN61000-3-2 (Typical PF 0.98/0.95) ClassA, Class C> 35% Load
Input Current (115/230VAC)	A	5.5 / 2.7
Temperature Coefficient	°C	<0.02%/°C (0-50°C)
Overcurrent Protection	-	Hiccup (12V model) Constant Current Limit (24V-48V models) >105% rated output power or >101% of peak output power
Overvoltage Protection (2)	V	12V: 13.8 - 16.2V, 24V: 30.3 - 35.5V, 36V: 41.4 - 48.6V, 48V: 60 - 69.6V
Overtemperature Protection (2)	-	Yes - Shutdown Output and Manual Reset (CNT or Re-power on)
Hold Up Time (115 / 230V input)	ms	16ms
Leakage Current (230VAC 60Hz)	mA	<0.75mA
Remote Sense	-	Yes
Remote On/Off	-	Possible (Active Low)
Standby Input Power Draw (3)	W	<0.5W
5V Standby (always on)	-	5V 0.3A
DC Good	-	DC Good, open collector signal, High on Fail
LED Indicator	-	Green LED = On
Output Remote Programming	-	By external voltage. See installation manual for details
Operating Temperature	°C	-25°C to +70°C. Derate linearly to 50% load from +50°C to +70°C (-40°C start up)
Storage Temperature	°C	-30°C to +85°C
Operating Humidity	-	30 - 90% RH (non condensing)
Storage Humidity	-	10 - 95% RH (non condensing)
Cooling	-	Forced Air by Blower Fans
Withstand Voltage	-	Input - Output : 4.25kVDC (20mA), Input - FG :2.25kVDC (20mA) Output - FG : 500VDC (100mA) For 1min.
Isolation Resistance	Ω	>100MΩ (500VDC) at 25°C & 70%RH
Vibration (non operating)	-	10 - 55Hz: 19.6m/s ² constant sweep 1 min X, Y, Z for 1 hour
Shock	-	<196.1 m/s ² (20G)
Immunity	-	Built To Meet EN61000-4-2 (Level 2,3), -3 (Level 3), -4 (Level 3), -5 (Level 3), -6 (Level 3), -8 (Level 4), -11
Safety Agency Approvals	-	Approved by UL60950-1, CSA C22.2 No.60950-1-07 (2nd Edition), EN60950-1, IEC60950-1 (2nd Edition), CE
Conducted & Radiated EMI	-	Built to meet EN55022-B, CISPR22-B
Weight (Typ)	g	1020
Size (L x W x H)	mm	218 x 105 x 41
Warranty	yrs	5

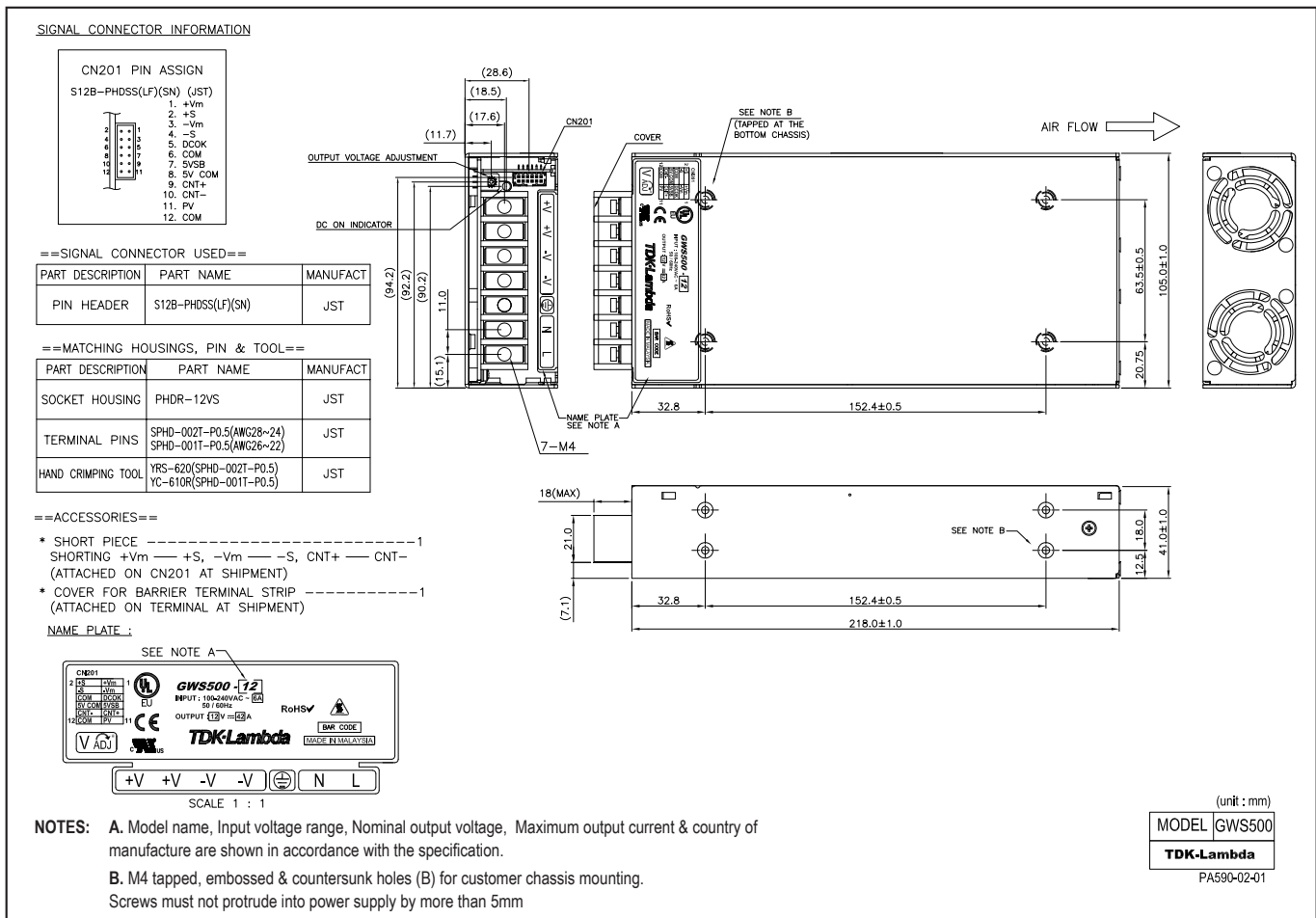
Notes: (1) 115 / 230VAC input (2) Recycle AC, or use remote on/off to reset (3) When remote off and 5V Aux supply @ no load

Model Selector

Model	Voltage (V)	Adjust ² Range (V)	Max Current (A)	Peak Curr. ¹ <10s (A)	Load Reg. (mV)	Line Reg. (mV)	Ripple Noise (mV)	Efficiency (typ) % (230VAC)
GWS500-12	12V	10.8 - 13.2	42	-	96	48	150	89
GWS500-24	24V	22 - 28.8	21	25.0	192	96	150	90
GWS500-36	36V	32 - 40	14	16.7	288	144	200	90
GWS500-48	48V	42 - 57.6	10.5	-	384	192	300	90

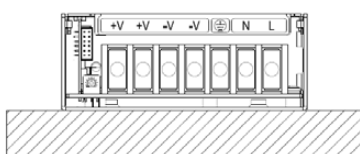
Notes: (1) Peak current 10seconds. 35% duty cycle max. (2) By trim pot provided. Wider adjustment is possible by external voltage control. See instruction manual for details.

Outline Drawing GWS500 Series

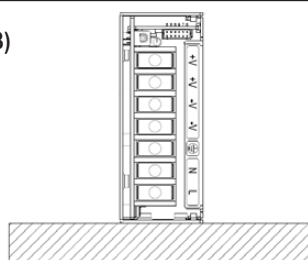


Mounting Options GWS500 Output Derating according to the Mounting Directions

(A) Standard Mounting



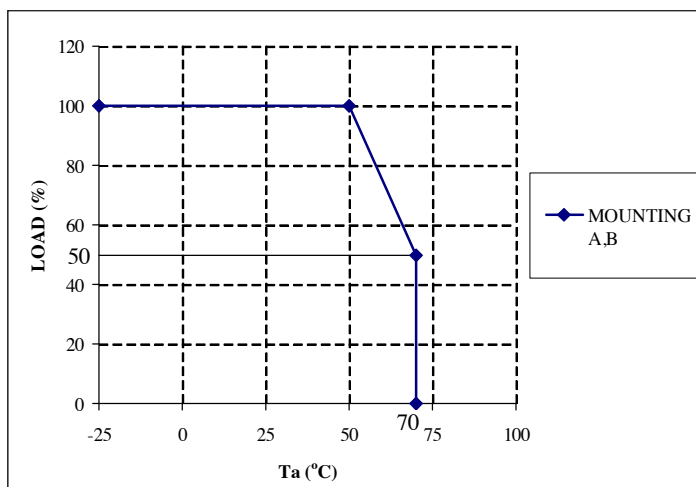
(B)



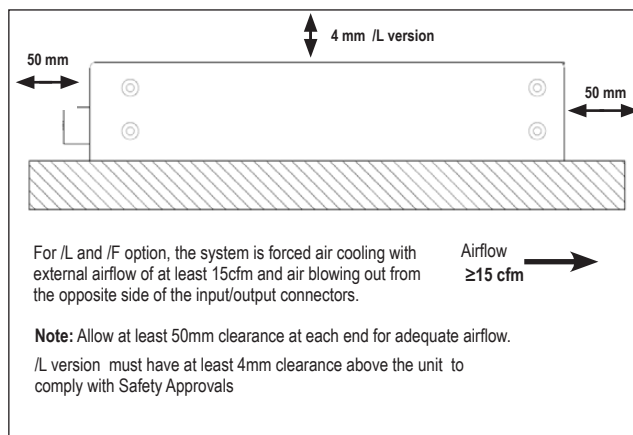
Mounting Method

Output Derating according to the Mounting Directions
Recommended standard mounting is Method (A).
Method (B) is also possible.

Output Derating Curve GWS500



Mounting Options GWS500 /L /F options



Options	
Suffix	Description
/ T	OTP auto recovery after unit cools down
/ RL	Remote ON/OFF reverse logic (Active High)
/ BAT	Battery charging for 24V (21~29V/17.6A) & 48V (42~58V/8.8A) only
/ F	Full cover without internal fan but require external forced air cooling
/ L	Without cover but require external forced air cooling
/ CO2	Double side coated pcb

MOQs apply to Option models

Please contact your local TDK-Lambda sales office for details.

GWS500 Output Voltage External Control (PV)

Output voltage external control function is available. Output voltage can be varied by applying an external voltage (3–6V) to "PV" terminal and "COM" terminal.
See instruction manual for details.



TDK-Lambda France SAS

3 Avenue du Canada
Parc Technopolis
Bâtiment Sigma
91940 les Ulis
France
Tel: +33 1 60 12 71 65
Fax: +33 1 60 12 71 66
france@fr.tdk-lambda.com
www.fr.tdk-lambda.com



Italy Sales Office

Via dei Lavoratori 128/130
20092 Cinisello Balsamo (MI)
Italy
Tel: +39 02 61 29 38 63
Fax: +39 02 61 29 09 00
info.italia@it.tdk-lambda.com
www.it.tdk-lambda.com



Netherlands

info@nl.tdk-lambda.com
www.nl.tdk-lambda.com



TDK-Lambda Germany GmbH

Karl-Bold-Strasse 40
77855 Achern
Germany
Tel: +49 7841 666 0
Fax: +49 7841 5000
info.germany@de.tdk-lambda.com
www.de.tdk-lambda.com



Austria Sales Office

Aredstrasse 22
2544 Leobersdorf
Austria
Tel: +43 2256 655 84
Fax: +43 2256 645 12
info@at.tdk-lambda.com
www.de.tdk-lambda.com



Switzerland Sales Office

Bahnhofstrasse 50
8305 Dietlikon
Switzerland
Tel: +41 44 850 53 53
Fax: +41 44 850 53 50
info@ch.tdk-lambda.com
www.de.tdk-lambda.com



Nordic Sales Office

Haderslevvej 36B
DK-6000 Kolding
Denmark
Tel: +45 2911 9556
info@dk.tdk-lambda.com



TDK-Lambda UK Ltd.

Kingsley Avenue
Ilfracombe
Devon EX34 8ES
United Kingdom
Tel: +44 (0) 12 71 85 66 66
Fax: +44 (0) 12 71 86 48 94
powersolutions@uk.tdk-lambda.com
www.uk.tdk-lambda.com



TDK-Lambda Ltd.

Kibbutz
Givat Hashlosa 48800
Israel
Tel: +9 723 902 4333
Fax: +9 723 902 4777
info@tdk-lambda.co.il
www.tdk-lambda.co.il



C.I.S.

Commercial Support:

Tel: +7 (495) 665 2627

Technical Support:

Tel: +7 (812) 658 0463
info@tdk-lambda.ru
www.tdk-lambda.ru

Local Distribution