

- ◆ Non-isolated Single Phase Voltage Regulator
- ◆ Load Current: 25A, 40A, 60A, 80A, 100A
- ◆ Regulating Potentiometer 150K/2W, 220K/2W, 470K/2W
- ◆ Protection Cover (optional)
- ◆ Internal RC Protection Circuit
- ◆ Potentiometer Gear
- ◆ LED Indicator
- ◆ RoHS Compliant



## Ordering Information

<b>KWR</b>	<b>240</b>	<b>F</b>	<b>40</b>	<b>-L</b>
KWR Series	Load Voltage 480: 480VAC	Regulating Potentiometer F: 150K/2W G: 220K/2W H: 470K/2W	Load Current 25: 25Amp 40: 40Amp 60: 60Amp 80: 80Amp 100: 100Amp	L: LED

## General Specifications

### Input Specifications

Regulating Potentiometer	F	150K/2W
	G	220K/2W
	H	470K/2W

### Output Specifications

Load Voltage Range	480VAC	24-530VAC
Maximum Surge Current (@10ms)	25A	250A
	40A	400A
	60A	600A
	80A	800A
	100A	1000A
Maximum Transient Overvoltage	480VAC	1200Vpk
Maximum Off-State Leakage Current@Rated Load Voltage	5mA	

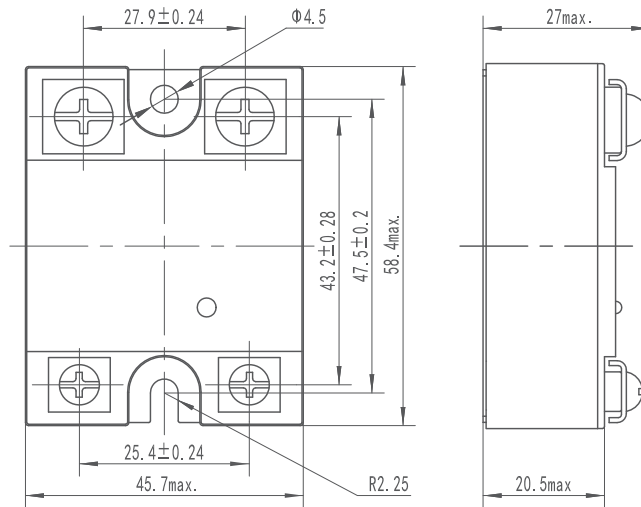
### General Specifications

Dielectric Strength (50/60Hz)	Input, output/Base	2500Vrms
Minimum Insulation Resistance (@500VDC)	1000MΩ	
Ambient Temperature Range	-30°C ~ +80°C	
Storage Temperature Range	-30°C ~ +100°C	
Weight (Typical)	10A/25A/40A/60A/80A	90g
	100A	150g

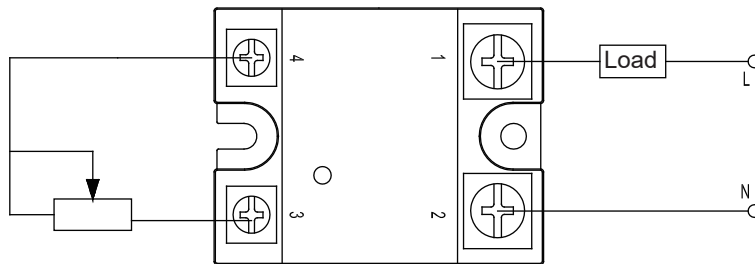
## Applications

Temperature adjustment devices, plastic molding machines, vulcanization machine, and etc.

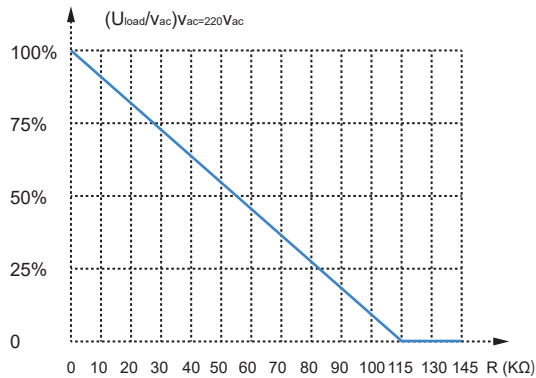
## Outline Dimensions



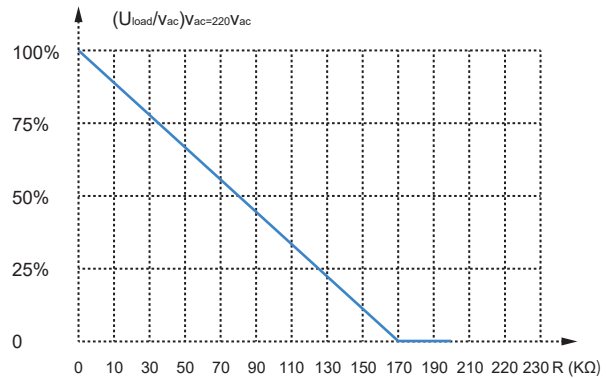
## Wiring Diagram



## Regulating Potentiometer Resistance VS Voltage Output Effective Value Curves

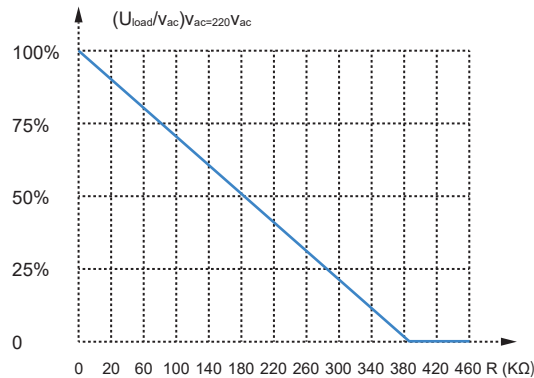


Output VS. External potentiometer 150 (kΩ)



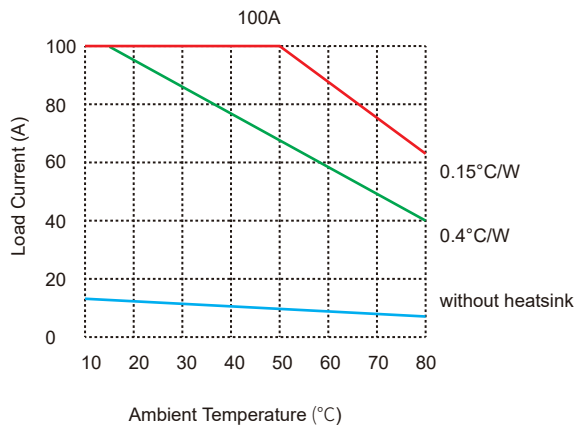
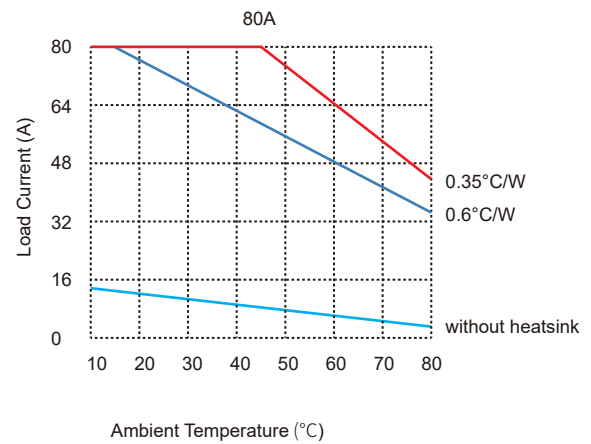
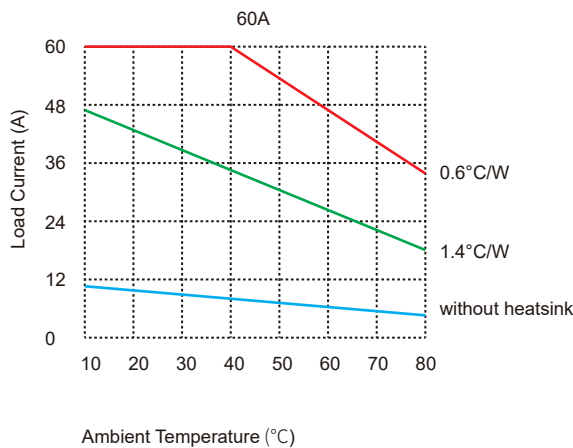
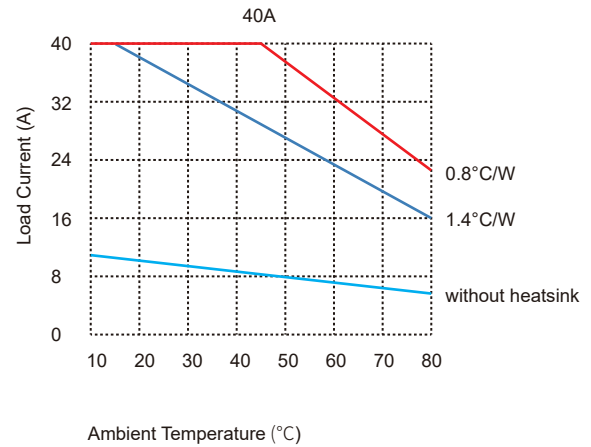
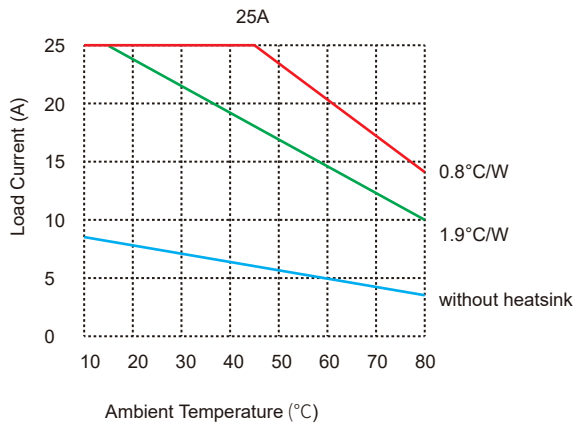
Output VS. External potentiometer 220 (kΩ)

## Regulating Potentiometer Resistance VS Voltage Output Effective Value Curves



Output VS. External potentiometer 470 (kΩ)

## Thermal Derating Curve



## General Notes

1. Relay must be mounted to proper sized heat sink based on thermal curves. Thermal grease or a thermal pad must be used between relay and heat sink and be torqued down to 18-20 /2.0-2.2 in-lb/N·m.
2. When connecting wiring to SSR please ensure screws are torqued down properly (input 4.43/0.5 in-lb/N·m M3 screws 5.13-8.67/0.58-0.98 in-lb/N·m, M4 screws 8.67 -12.13/0.98-1.37 in-lb/N·m)
3. When Ambient temperature is above 25°C see Thermal Derating Curves.

## Agency Approvals (Certification)

