

RSEG SERIES

Single-Phase Filter with On-board Type



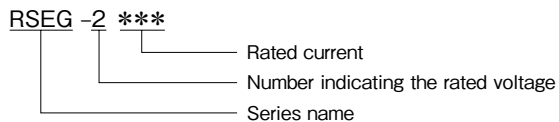
FEATURES

- Space savings, due to compact dimensions.
- Wide range lineup for nominal current.

SAFETY STANDARDS

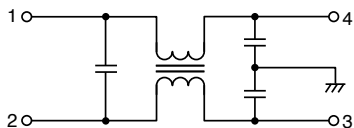
UL1283 UL File No. E62388
 CSA C22.2 No.8 (cUL) UL File No. E62388
 EN60939-1/-2 (ENEC14) Licence Ref. No. SE/07115-11

PRODUCT IDENTIFICATION



CONFORMITY TO RoHS Directive

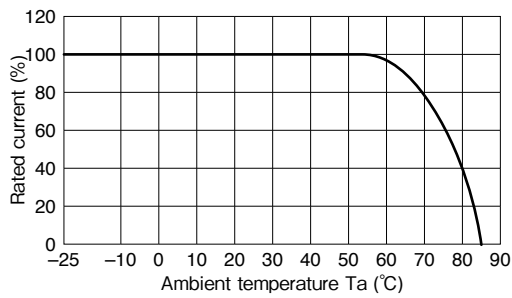
CIRCUIT DIAGRAM



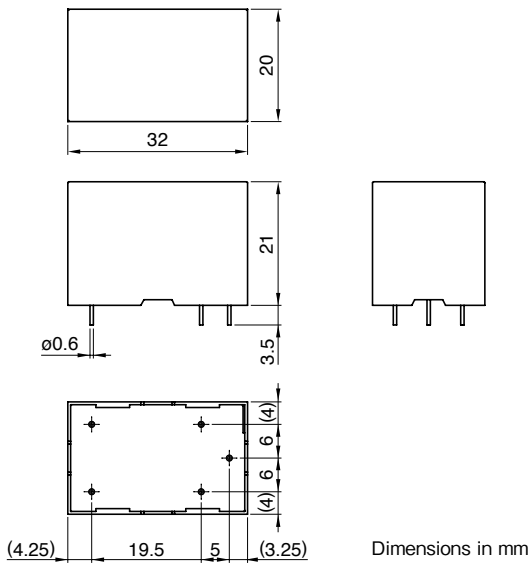
ELECTRICAL CHARACTERISTICS

Part No.	Rated voltage (AC/DC)	Rated current (AC/DC)	Withstand voltage	Insulation resistance	Leakage current	Operating temperature range	With derating over	DC resistance (mΩ)	Attenuation frequency range (MHz)		Weight (g)
									Common mode	Differential mode	
									at 20dB	at 20dB	
RSEG-20R5	250V	0.5A	AC.1500V 60s [line - earth]	100MΩ min. [DC.500V/ 1min]	0.75mA max. [250V/60Hz]	-25 to +85°C	55°C	400 max.	0.3 to 10	1.5 to 30	14
RSEG-2001		1A						350 max.	0.3 to 10	1.5 to 30	14
RSEG-2002		2A						310 max.	0.5 to 20	1.5 to 30	14
RSEG-2003		3A						150 max.	0.5 to 20	1.5 to 30	≒25
RSEG-2004		4A						130 max.	1 to 20	1.5 to 30	≒25
RSEG-2006		6A						100 max.	1 to 20	1.5 to 30	≒25

DERATING GRAPH

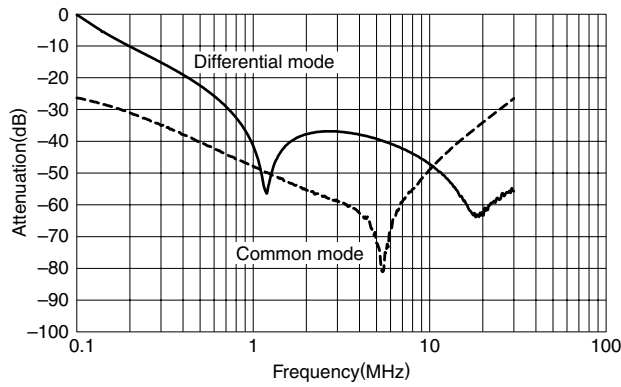


MECHANICAL

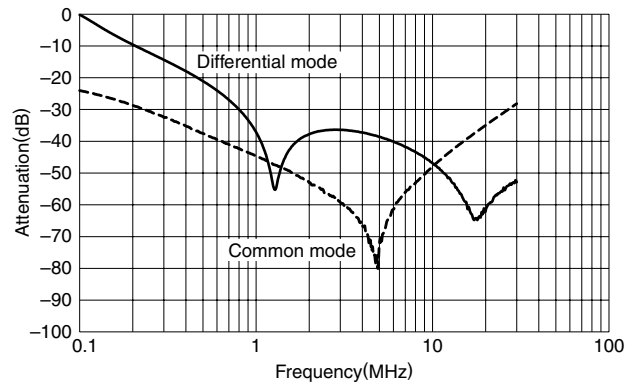


■ ATTENUATION vs. FREQUENCY CHARACTERISTICS

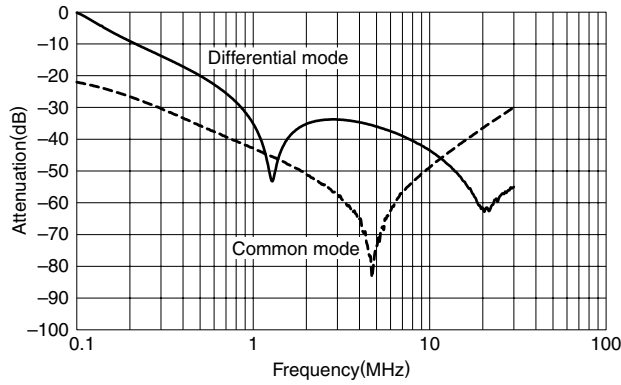
RSEG-20R5



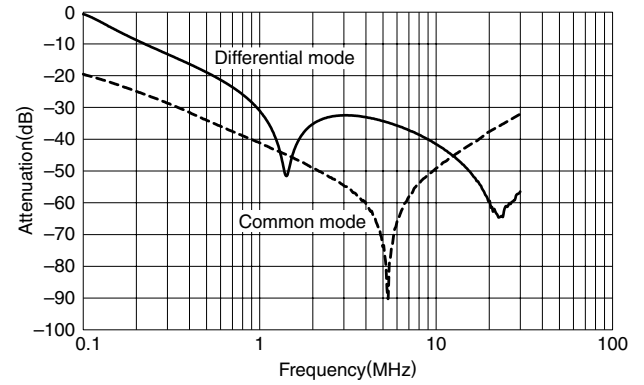
RSEG-2001



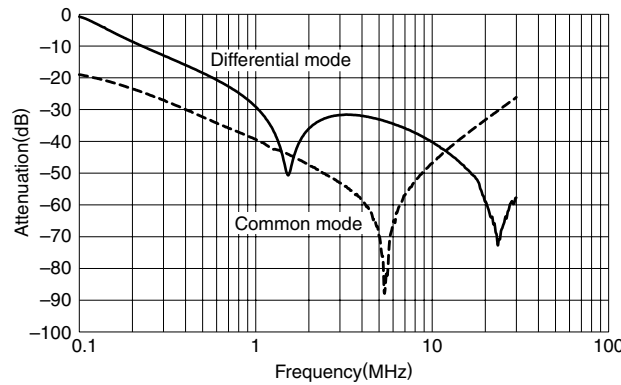
RSEG-2002



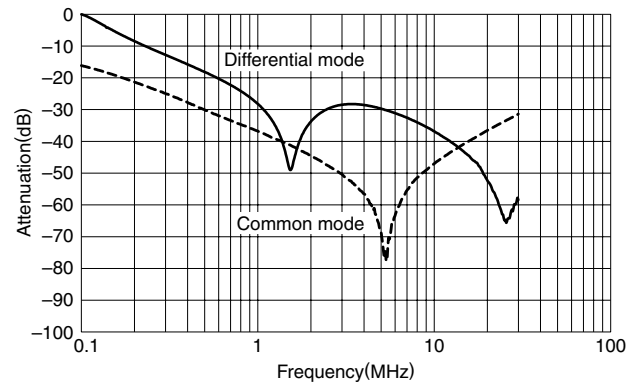
RSEG-2003



RSEG-2004



RSEG-2006



TDK·Lambda